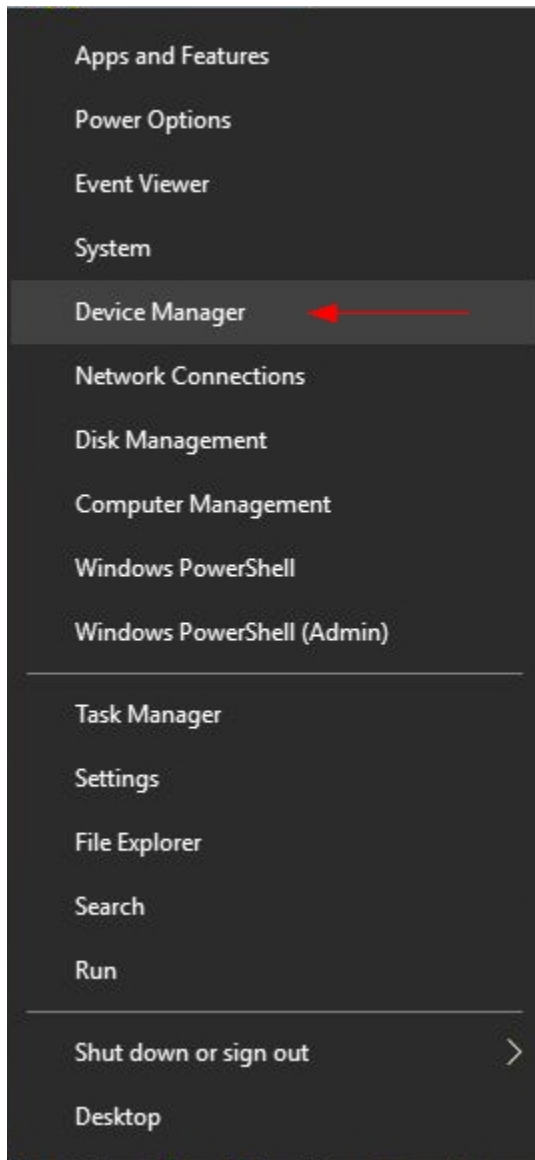


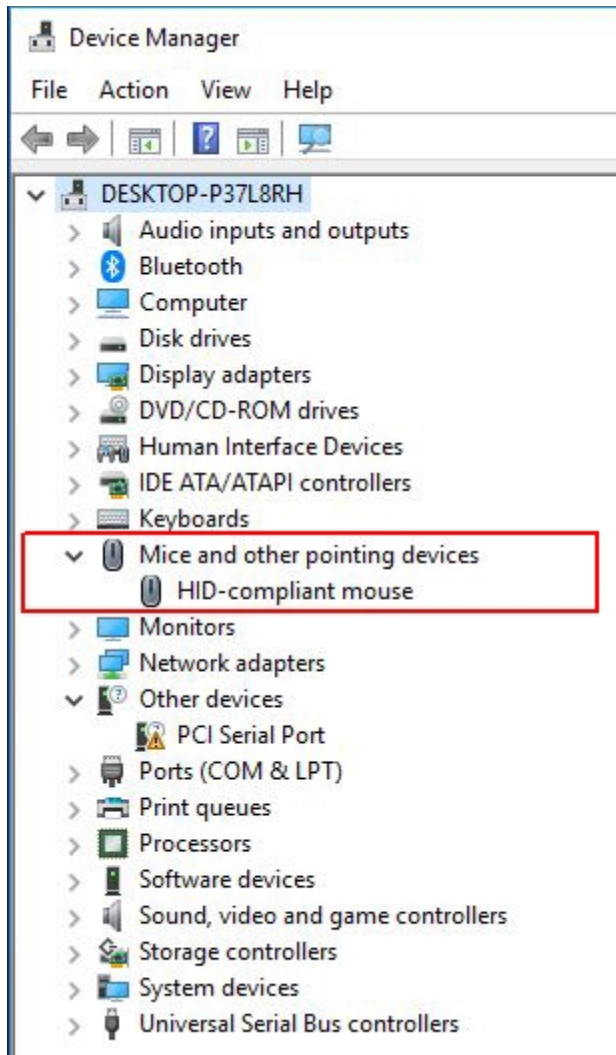
USB/ALDL Cable Communication Problems

If you are having problems communicating with a 1994 – 95 LT1 car when using our USB/ALDL cable, please check the following:

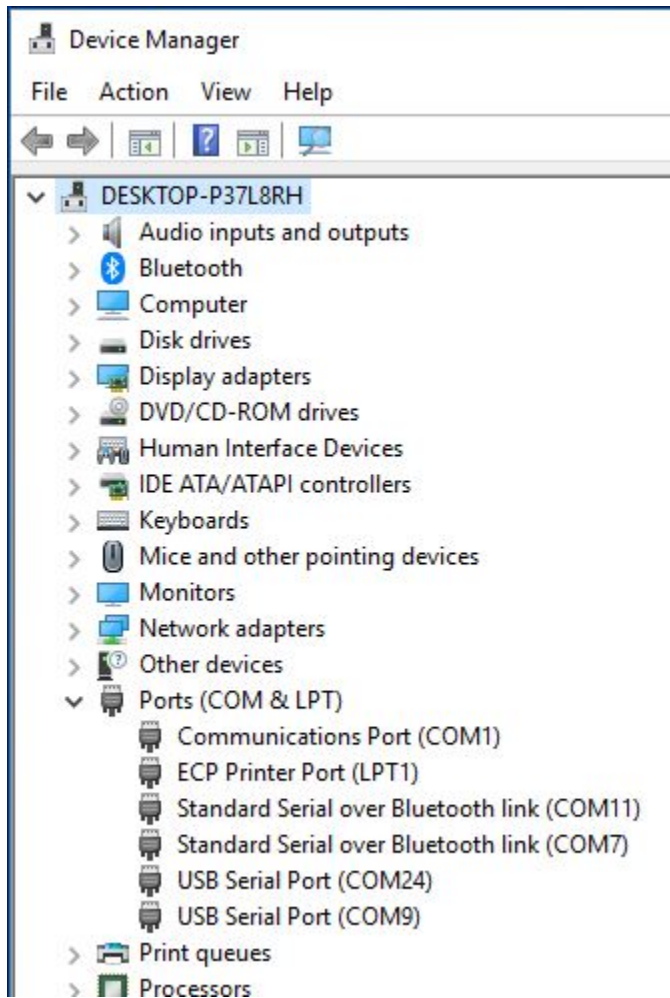
1. Unplug the ALDL cable from your PC and reboot your PC.
2. Once Windows is back up and running plug your ALDL cable into a USB port on your PC. (It should not be connected to the car.) If you get the Windows 'Found new hardware' message and Windows asks to search for a compatible driver then the drivers did not install correctly and you should repeat the driver installation process.
3. Once the USB drivers are installed, right-click on the Windows 'Start' button and then select 'Device Manager' from the pop-up menu.



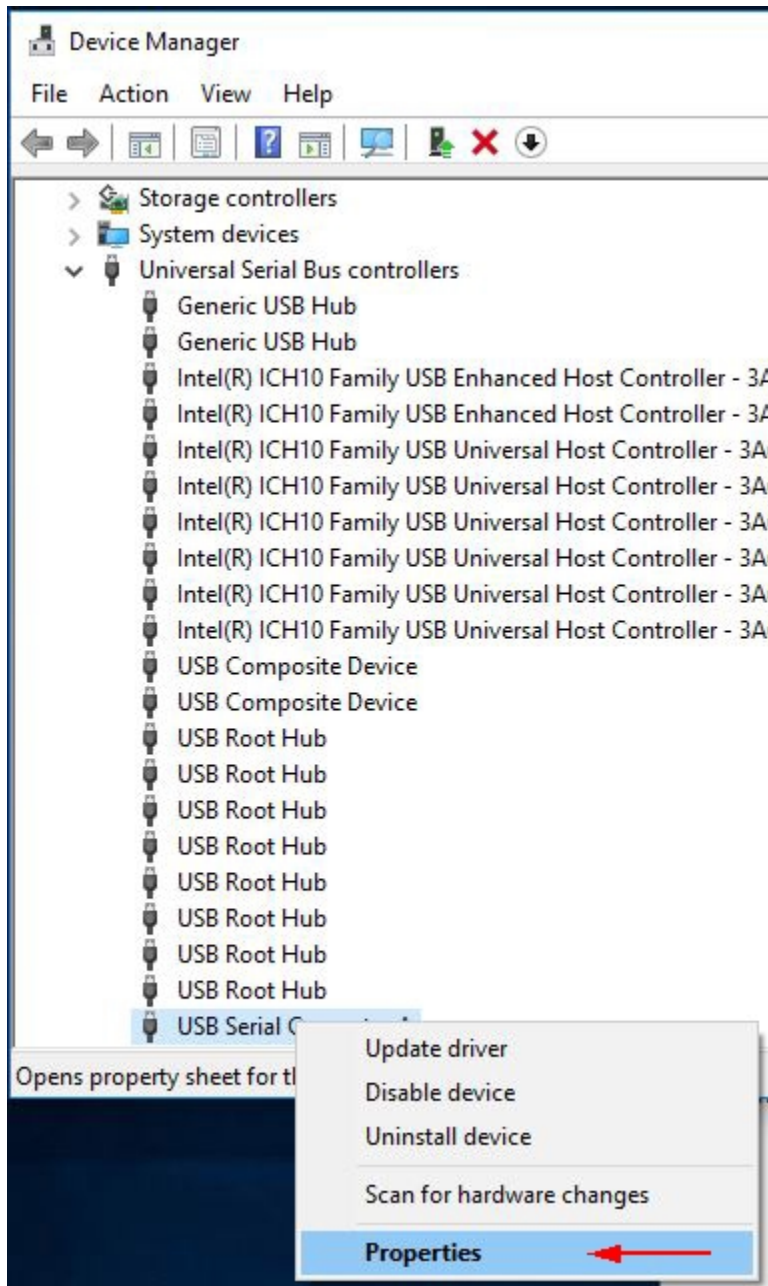
4. Click on the arrow to the left of 'Mice and other pointing devices' to expand this section and verify there is no 'Microsoft Serial Ball Point' item listed. If there is right click on this item and select 'Disable' from the pop-up menu.



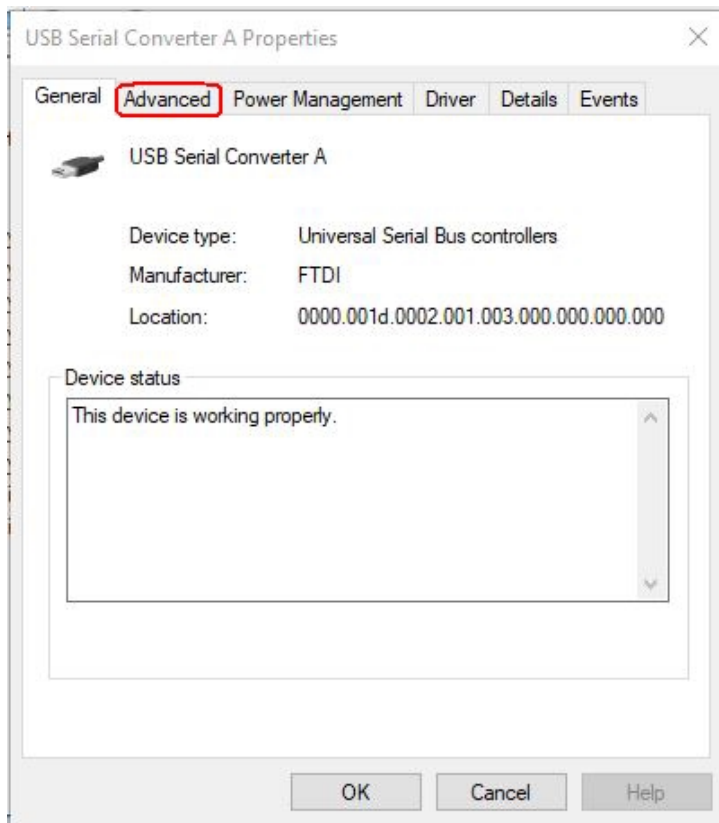
5. Click on the arrow to the left of 'Ports (COM and LPT)' to expand this section and verify that there is at least one USB Serial Port listed there. Unplug the ALDL cable and the COM port assigned to the USB/ALDL cable should go away and then reappear when you plug the ALDL cable back in.



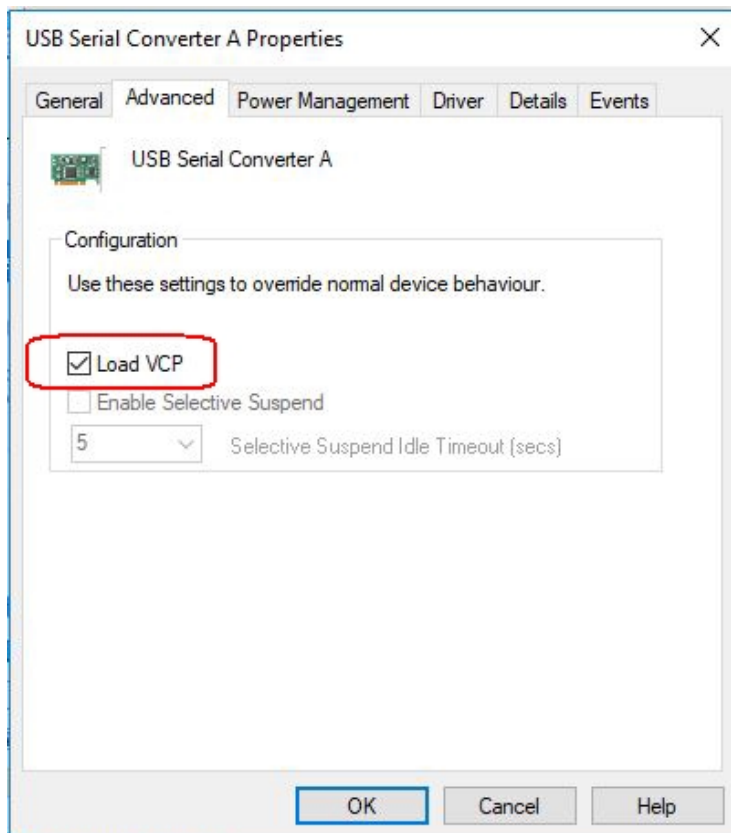
If there is no USB Serial Port assigned to the cable listed here then expand the 'Universal Serial Bus controllers' section of the Device Manager and right-click on the 'USB Serial Converter'. Select 'Properties' from the pop-up menu.



On the Properties screen, click on the 'Advanced' tab at the top of the screen.

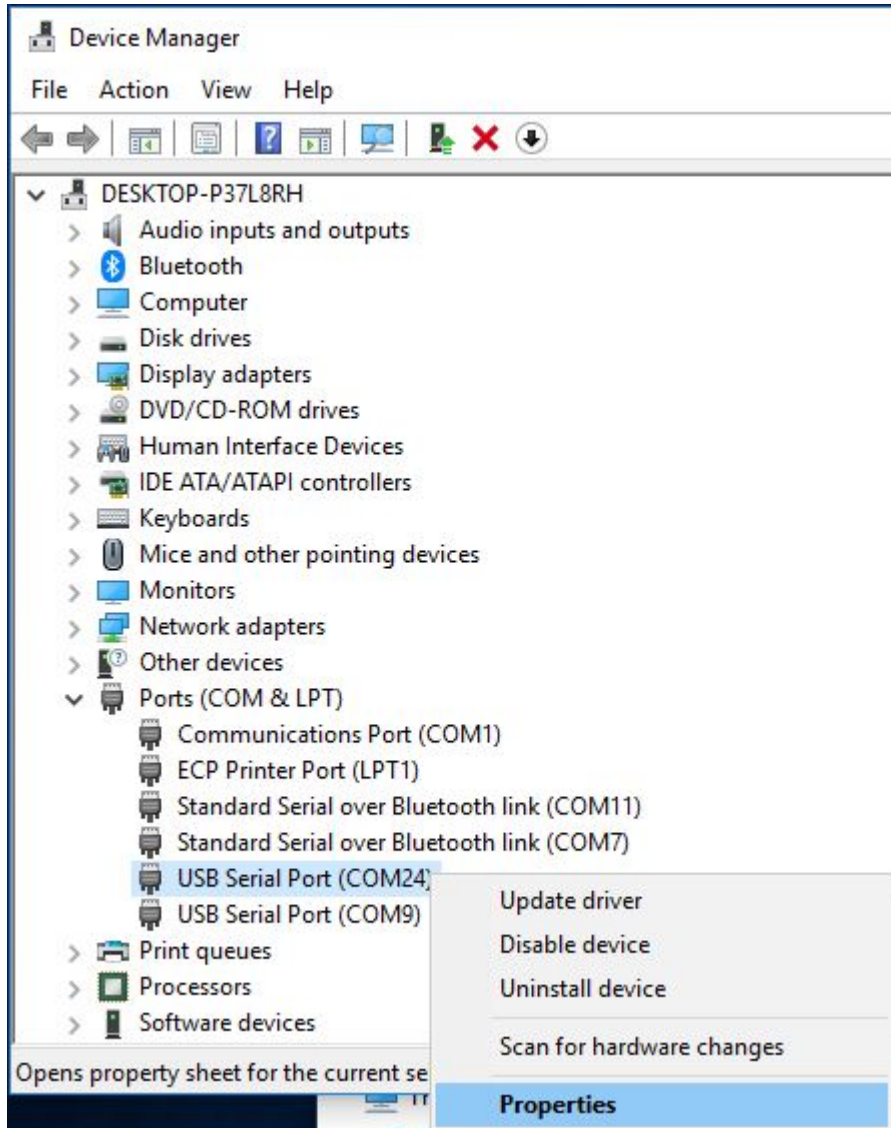


On the Advanced screen check the box indicated as 'Load VCP'. Then hit 'OK'.

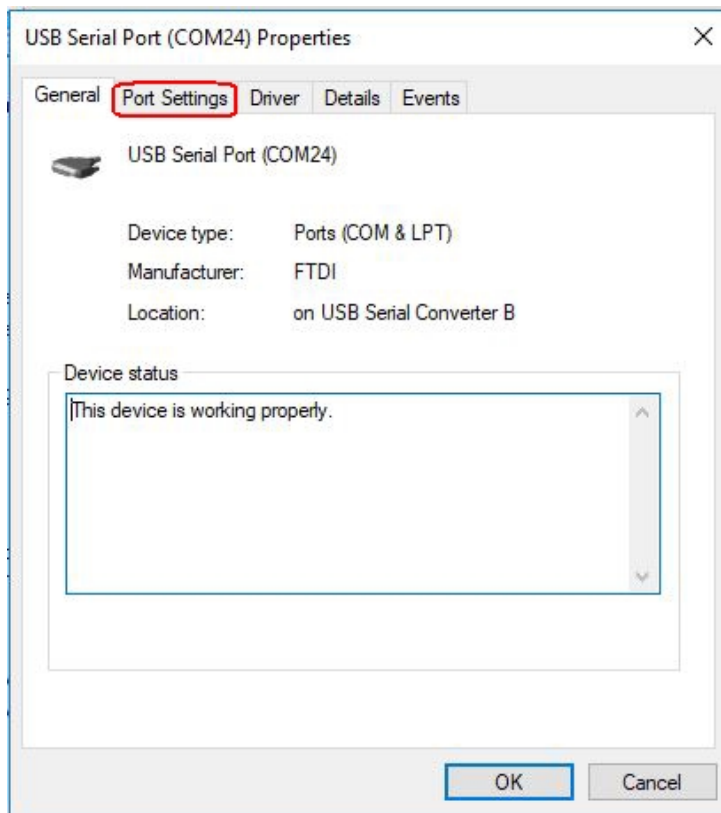


Unplug the USB/ALDL cable, and plug it back in. Expand the Ports (COM & LPT) section of the Device Manager and you should now see a USB Serial Port listed.

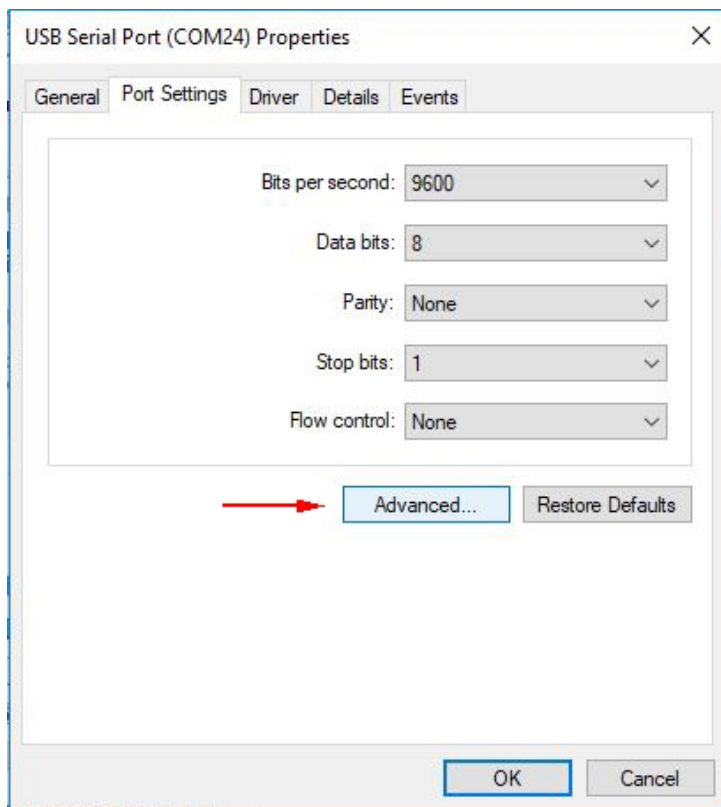
6. Note the COM port number assigned to the USB Serial Port. It should be a COM port between 1 and 16. If a COM port number greater than 16 was assigned to the cable you'll need to change the COM port number manually. To do so right click on the USB Serial Port on the Device Manager screen and select 'Properties'.



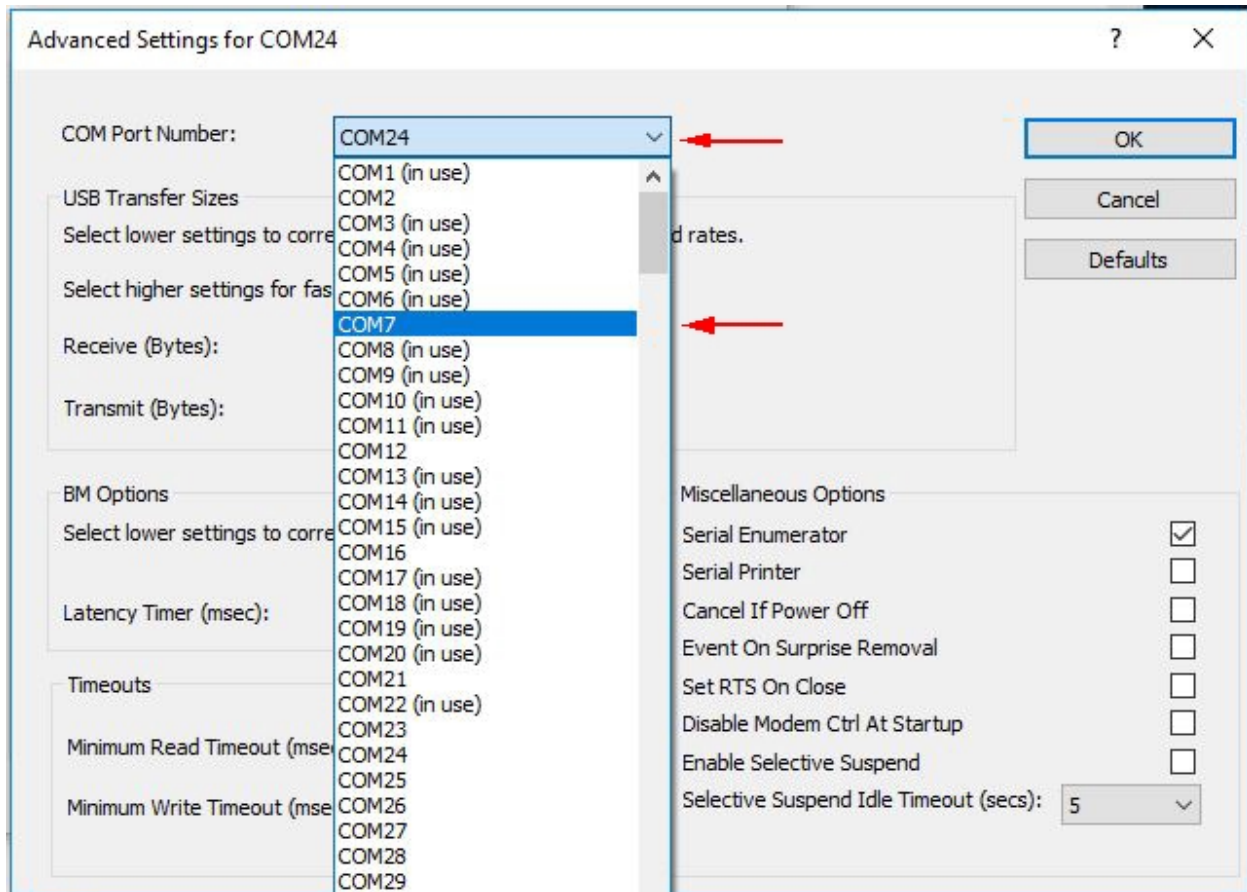
Click on the 'Port Settings' tab.



On the Port Setting screen click on the 'Advanced' button.



On the Advanced Settings screen click on the down arrow to the right of the 'COM Port Number' box and select a new COM port number of 16 or less. (Note: the COM port number you select should not be currently in use by another device.)

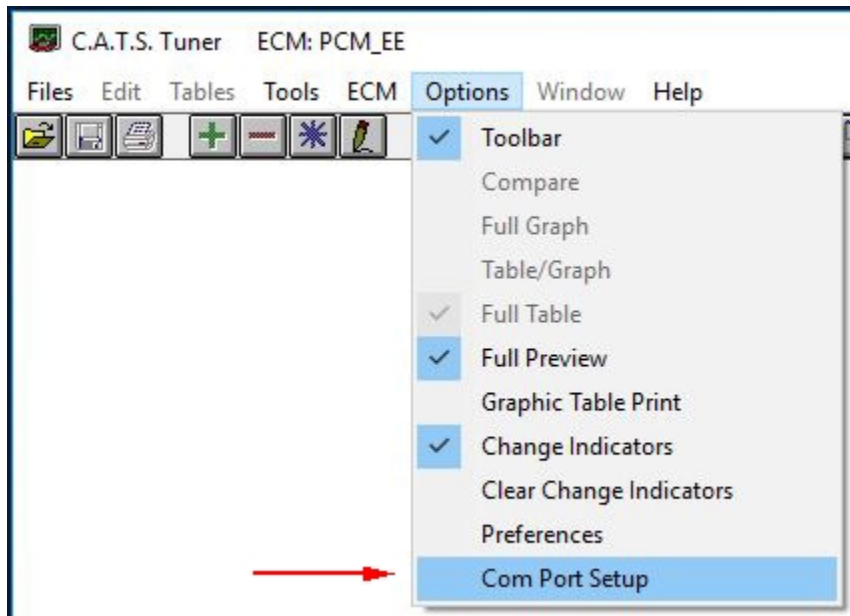


Click on the 'OK' button to close the Advanced Settings screen and then click on the 'OK' button on the USB Serial Port Properties screen.

7. Exit the Device Manager.

8. Run the Tuner program and click on the 'ECM' menu. Select 'PCM_EE' from the drop-down list.

9. Click on the 'Options' menu and select 'Comm Port Setup' from the drop-down list.



10. On the Comm Port Selection screen click on down arrow to the right of the 'COM Port Number' box and select the COM port number that was assigned to the ALDL cable (it should be shown as 'Available') and then click on the 'OK' button.

