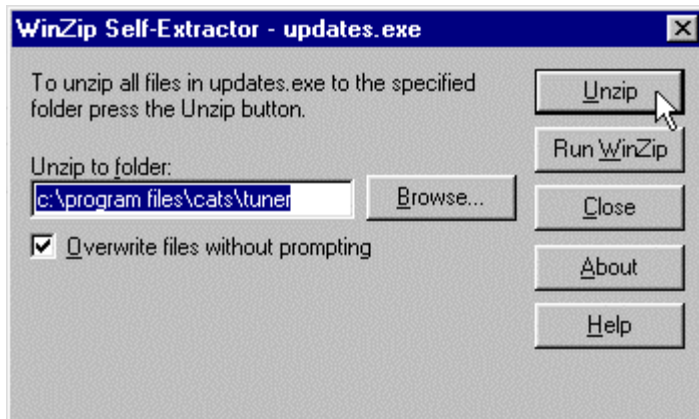


Installing ECM Definition File Updates

To install your ECM Definition File updates, double click on the self-extracting program file that you downloaded.

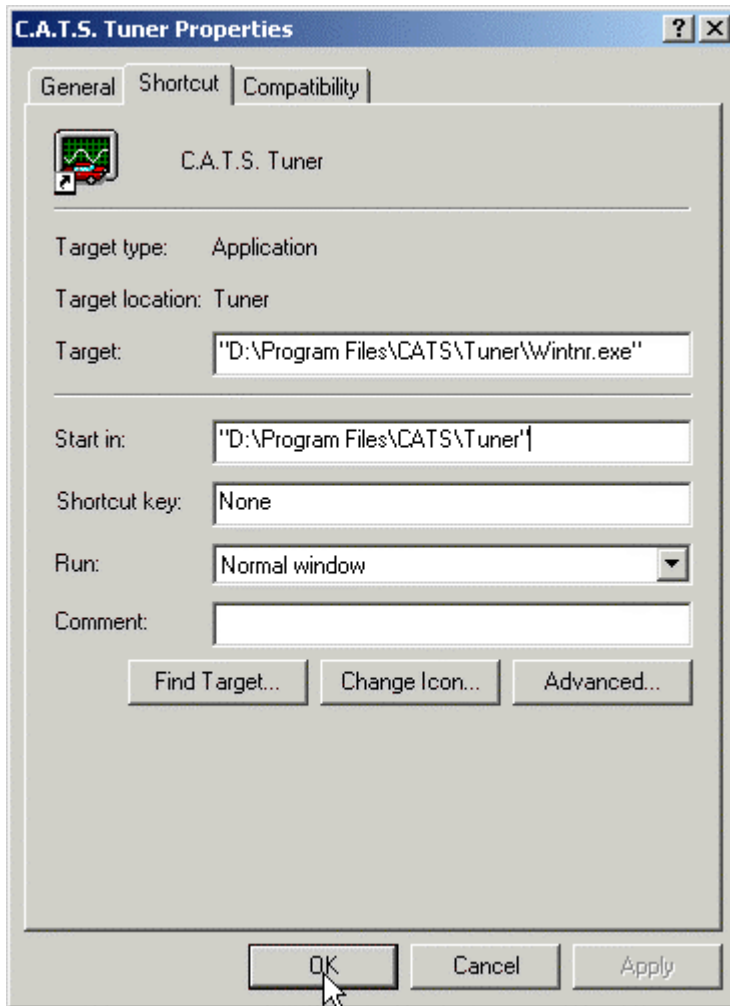
This will display the following WinZip Self-Extractor screen:



By default the extractor program will unzip the updates into the folder 'c:\program files\cats\tuner' on your PC. This is the default install folder of the Tuner and RT Tuner programs. If you changed the installation folder when you originally installed the Tuner or RT Tuner program, then edit the folder specified in the 'Unzip to folder:' box or click on the 'Browse' button to locate your folder into which you installed the program.

Note: Some versions of Windows will change the folder into which the Tuner and RT Tuner programs are installed.

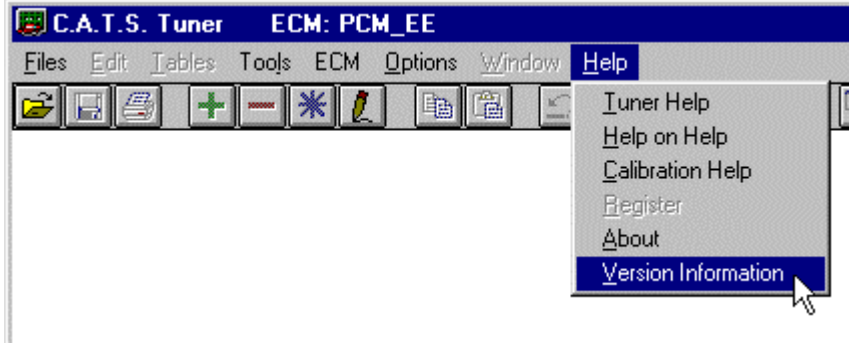
To check the Tuner/RT Tuner program folder right click on the Tuner or RT Tuner icon on your Desktop and select 'Properties' from the pop-up menu. This will display the Properties screen:



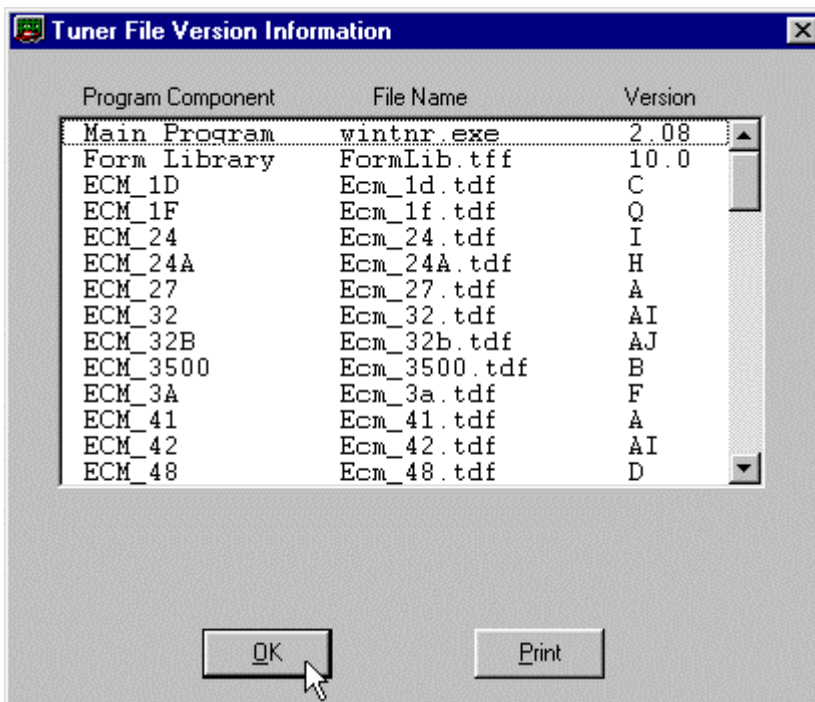
The Tuner/RT Tuner folder will be shown in the 'Start in:' box on the Properties screen. Make sure that this is the folder that is shown in the 'Unzip to folder:' box in the self-extractor program.

Verify that the 'Overwrite files without prompting' check box is checked and then click on the 'Unzip' button. This will unzip the ECM Definition File updates and place them in the specified folder.

To verify that the updates installed properly, run the Tuner or RT Tuner program, click on the 'Help' menu in the program's toolbar and select 'Version Information' from the drop \-down list.



This will display the Version Information screen where you can check the version of each ECM Definition File that you have installed.



Once you have verified that the updates have installed properly you can delete the self-extractor file that you downloaded.

'Can not create a file' error:

The self-extracting file normally unzips the ECM Definition File updates into the default Tuner/RT Tuner folder (c:\program files\cats\tuner). If you are running Windows 7, 8 or 10 the operating system may not allow the self-extractor to unzip these files to the default folder. If you get a 'Can not create a file' error message change the 'Unzip to folder' when you run the self-extractor to your Desktop and then manually copy the unzipped files to your Tuner/RT Tuner folder over-writing the old files.